



ENDLESS ENERGY
FOR LIMITLESS GREEN

en.si-neng.com  

Sineng Electric Co., Ltd.
No.6 Hehui Road, Huishan District, Wuxi, China-214174

Sineng Electric (India) Pvt. Ltd.
Plot SY #50/2-5, Heggadadevanapura, APMC Rd., Bangalore, India-562123

An aerial photograph of a wide, winding river flowing through a lush green landscape. The river has several large, grassy islands and peninsulas. In the background, rolling hills and mountains are visible under a dramatic, cloudy sky with warm, golden light, suggesting sunrise or sunset. A small town or village is visible on the right side of the river.

As a global leading renewable
energy solutions provider,
Sineng Electric aims to
embrace a cleaner future,
making solar energy affordable
and truly benefit
our customers worldwide.



ABOUT US

Sineng Electric Co., Ltd. (stock code: 300827) is a leading global high-tech enterprise specialized in power electronic products R&D, manufacturing, trading and maintenance, covering its business in PV inverter, energy storage system, power quality control and other fields.

Adhering to the philosophy of "Sincerity, Unity and Progress", Sineng has been working relentlessly to ensure state-of-the-art power electronics products and solutions. As a product-focused company, Sineng is always committed to delivering to the world green energy and advanced power electronics products.

Centered around enhancing customer values, Sineng insists on product and technology innovation, constantly improving the internationalization strategy. With business covering Asia, Middle East, South America, Europe and other markets, Sineng Electric plays an active role in global energy transition, striving to build a world-class green technology enterprise and make more contributions towards a better earth.



CONTENTS

PV INVERTER

Residential inverter
Central inverter
String inverter

ENERGY STORAGE SYSTEM

Central PCS
String PCS
BESS

POWER QUALITY CONTROL

Active power filter
Static var generator
Smart power quality correction device

10 YEARS

Industry experience

3

R&D centers

3

Manufacturing facilities

40GW+

Cumulative shipments
(By the end of 2021)

SINENG

MILESTONES & ACHIEVEMENTS

2012

Sineng established



2016

Inauguration of a 20GW manufacturing base in Wuxi, China



2020

Listed at Shenzhen Stock Exchange
Stock Code: 300827



2014

Acquired PV business of a fortune 500 listed company



2018

Inauguration of 1st overseas manufacturing base in Bangalore, India



2021

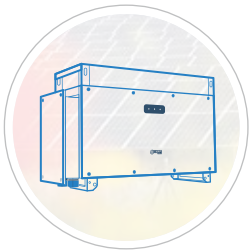
Inauguration of a 10GW manufacturing base in Ningxia, China



PV INVERTER



Residential Inverter



String Inverter



Central Inverter

Sineng Electric provides all-scenario PV inverter solutions, covering 3kW~6800kW central and string inverters, which are widely adopted in ground mounted, floating, C&I rooftop and residential projects to meet the diverse demands of customers.

3

Manufacturing facilities

40GW+

Cumulative Shipments
(By the end of 2021)

PV INVERTER APPLICATION CASES



330MW

Ground Mounted PV Plant

Installed capacity is generally above 1MW, which is mounted on flat ground, with consistently oriented modules without occlusion. With access to the power grid at a voltage of 22kV, 35kV or above.



Binh Dinh, Vietnam



100MW

Floating PV Plant

Installed capacity is generally above 1MW, which is mounted on a structure that floats on a body of water, typically a reservoir or a lake.



Guangxi, China



1.68MW

C&I Rooftop PV Plant

Installed capacity is generally 500kW–6MW, which is designed and installed for commercial or industrial applications, with inconsistently oriented modules with some occlusions.



Gunsan, South Korea



5kW

Residential PV System

Installed capacity is generally 3kW–25kW, which is typically mounted on a homeowner's roof, but could also be mounted in the backyard or on the roof of another structure on the property.

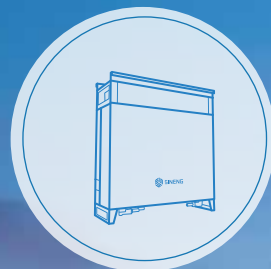


Wuxi, China

ENERGY STORAGE SYSTEM



Central PCS



String PCS



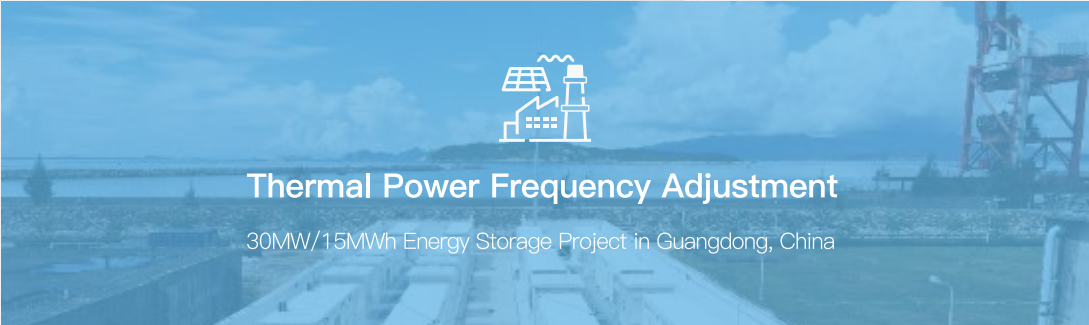
BESS


Sineng Electric provides all-scenario ESS solution, including 1000V/1500V central and string PCS as well as system integration products, applicable to multiple scenarios such as power generation side, power grid side, user side and micro-grid.

1GW+

Cumulative Shipments

ESS APPLICATION CASES




Thermal Power Frequency Adjustment
30MW/15MWh Energy Storage Project in Guangdong, China




ESS
100MW/200MWh Energy Storage Project in Shandong, China



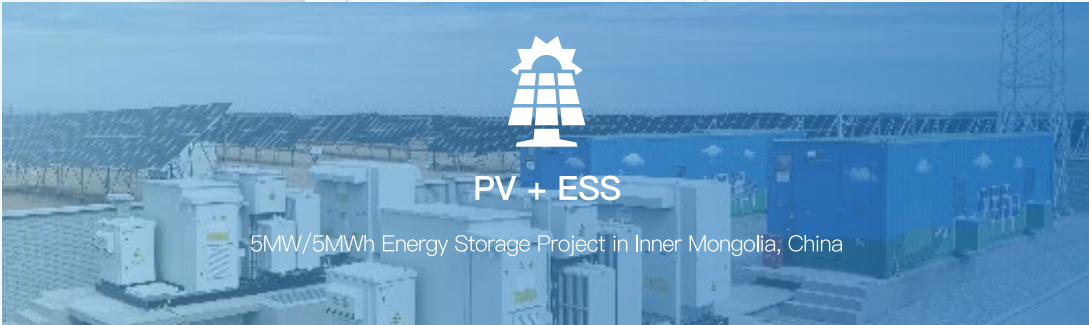

Grid Side Peak Shaving
20MW/40MWh Energy Storage Project in Hunan, China




Peak & Valley Coordination
10MW/40MWh Energy Storage Project in Jiangsu, China





Wind + ESS
70MW/140MWh Energy Storage Project in Inner Mongolia, China




PV + ESS
5MW/5MWh Energy Storage Project in Inner Mongolia, China

POWER QUALITY CONTROL

Sineng Electric provides all-scenario power quality management solutions, including a full range of active power filters, static var generators, smart power quality correction devices and other products, which are employed in various industries like communications, medical, rail transit, petroleum and petrochemical, metallurgy, tobacco, etc.



Common Power Quality Problems in Distribution System

With more and more nonlinear loads in distribution system, the following power quality problems become increasingly common.





Power Harmonic



Power Outage



Abnormal Frequency



Voltage Leap



Three-phase Unbalance



Low Power Factor



Impacts Caused by Power Quality Problems



PENALTY CAUSED
BY LOW POWER FACTOR



HALT



ABNORMAL OPERATION



OVERHEATING OPERATION



GRID-CONNECTED EQUIPMENT
IS FREQUENTLY OFF GRID



SHORTEN SERVICE LIFE



LOW EFFICIENCY PRODUCTION



EQUIPMENT DAMAGE



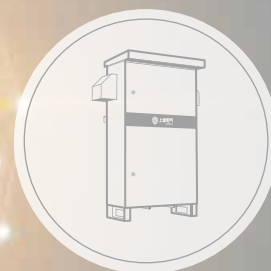
Power Quality Products Employed in Various Industries



Active Power Filter



Static Var Generator



Smart Power Quality Correction Device





3 R&D CENTERS

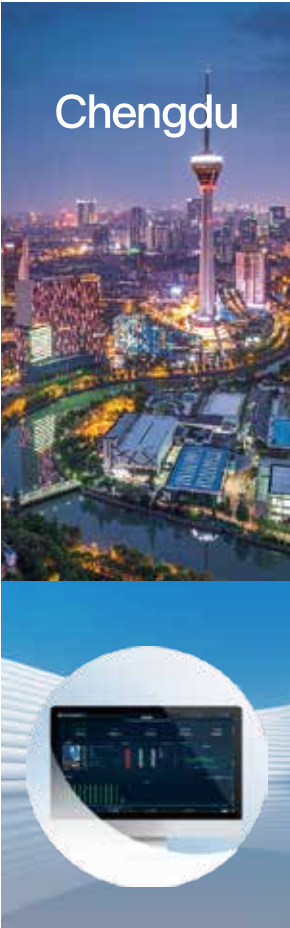
Concentrating on power electronics innovation technology and product R&D



Low Power Electronic Products



High Power Electronic Products



Smart Energy Management

3 GLOBAL MANUFACTURING BASES

Realizing 40GW annual production capacity in total through lean manufacturing



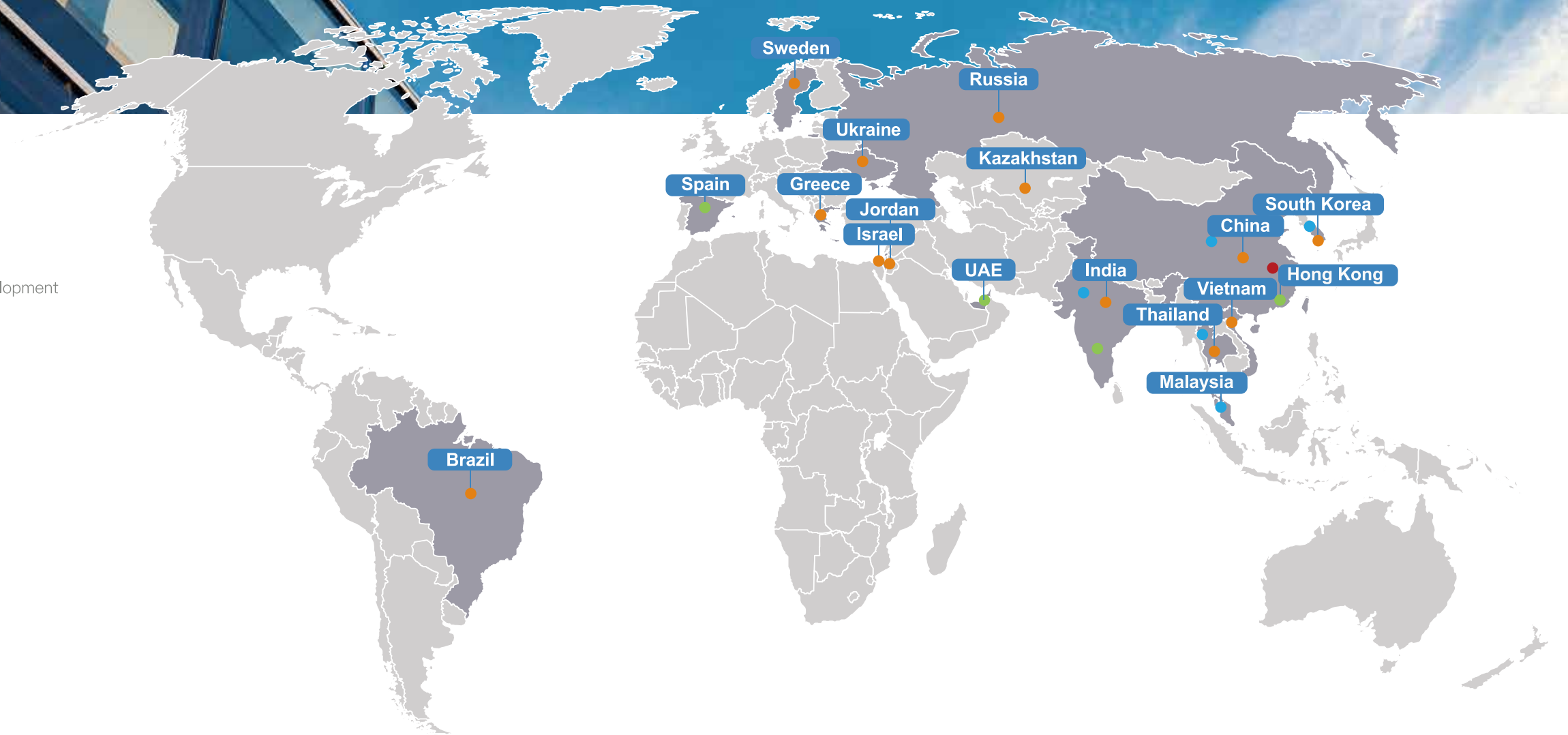


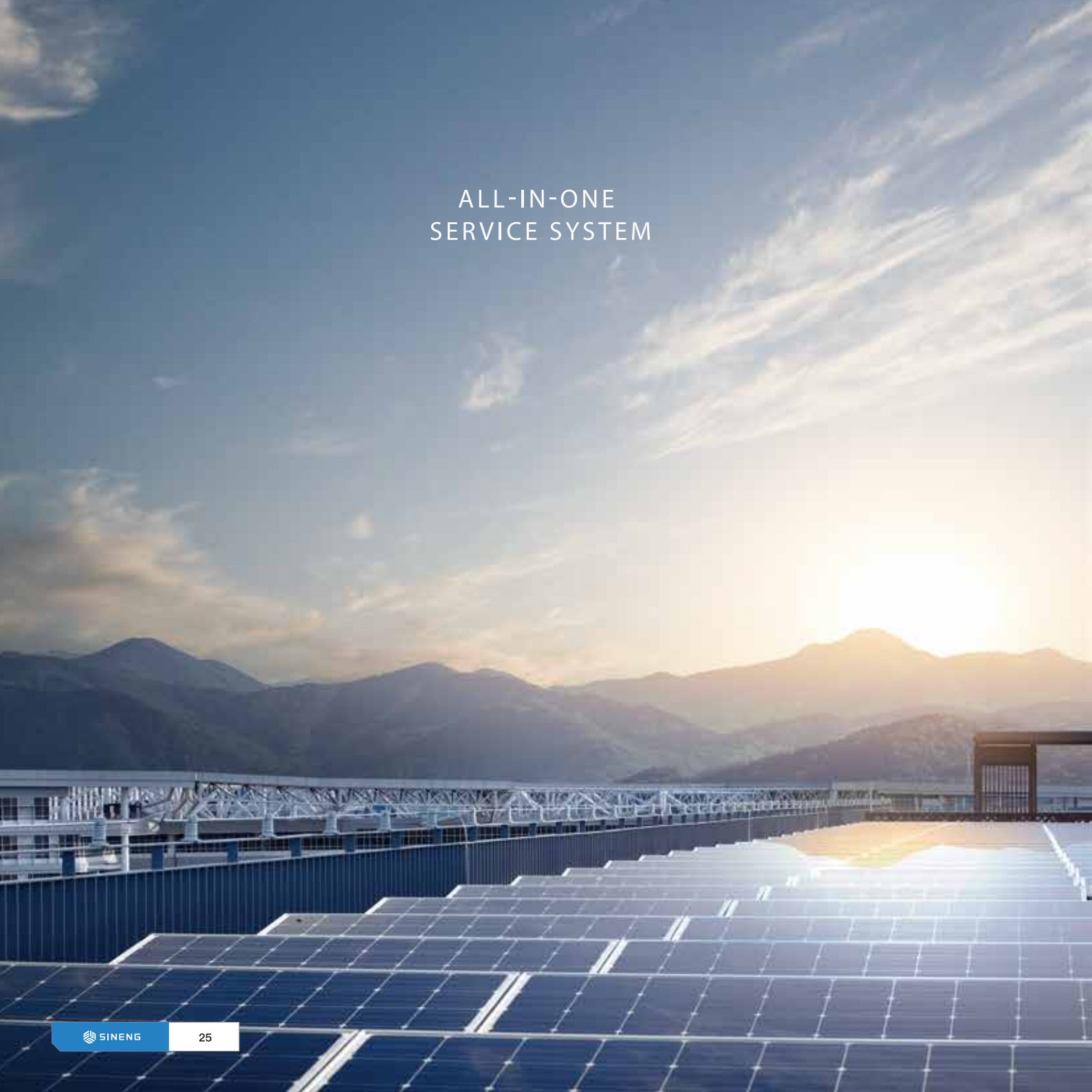
40GW+

Cumulative Shipments

Contributing to global energy transition and green development

- HQ
- Branch Company
- Marketing Center
- Application





ALL-IN-ONE
SERVICE SYSTEM

ALL-IN-ONE SERVICE SYSTEM



24/7
Service Hotline



21
Service Centers



100+
Engineers



Pre-sales /
Under-sales Service

- Equipment introduction
- Solution consultation
- PV plant experience sharing
- Intelligent services



After-sales Service

- Training and guidance
- System online monitoring
- Installation & commissioning
- Inspection & upgrading
- Remote technical support
- Free maintenance within warranty
- Evaluation and optimization



Onsite Service Response

- 24H China & India
- 48H Other countries

MAJOR CUSTOMERS & PARTNERS

